

## MI03

FRAÇÃO  
FRACTION

V4

TIPOLOGIA  
TYPOLOGY

440.58m<sup>2</sup>

ÁREA TOTAL DO LOTE  
TOTAL LOT AREA

362.23m<sup>2</sup>

ÁREA INTERIOR  
INTERIOR AREA

16.08m<sup>2</sup>

VARANDAS  
BALCONIES

309.41m<sup>2</sup>

TERRAÇO / JARDIM  
TERRACE / GARDEN

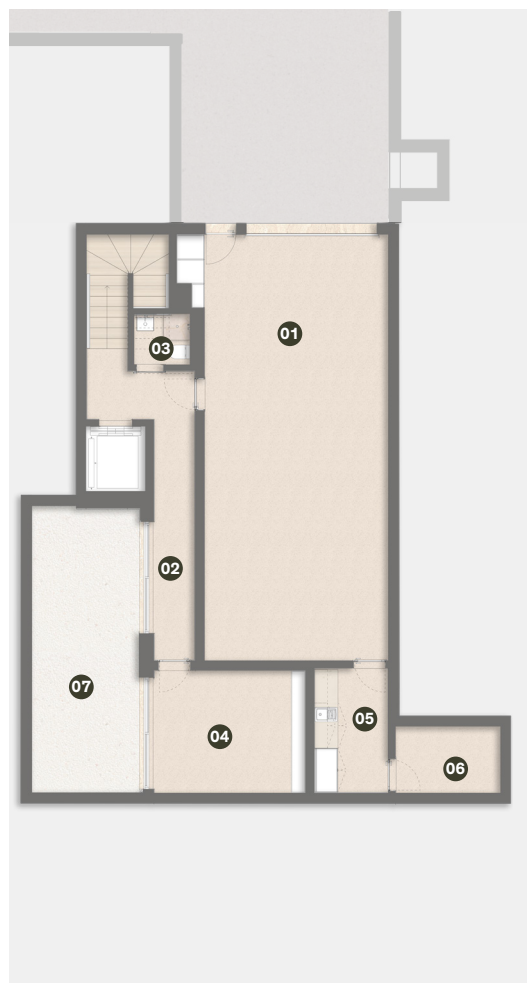
20.05m<sup>2</sup>

PISCINA  
SWIMMING POOL

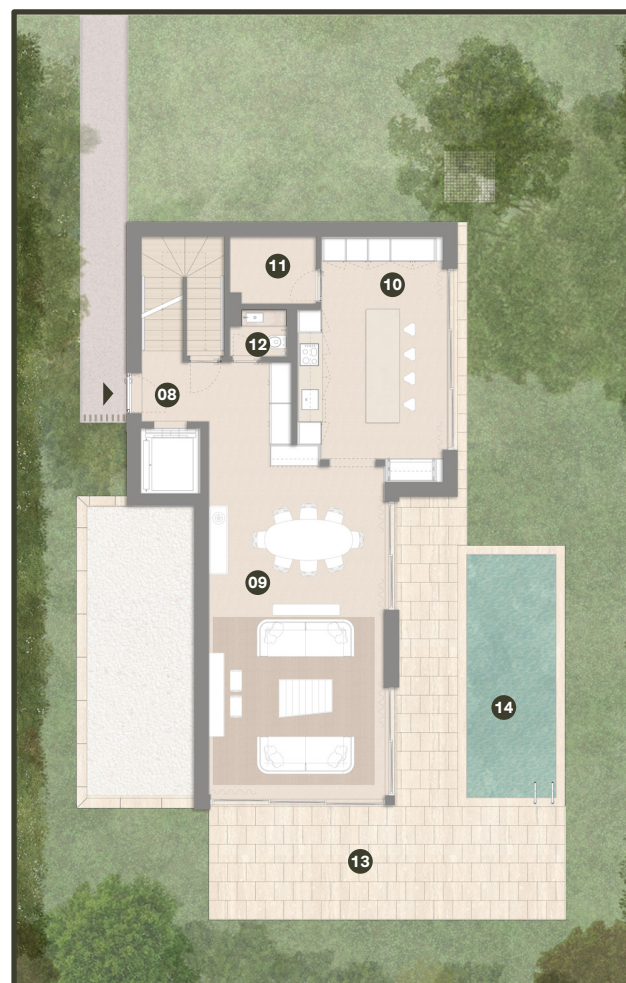
74.16m<sup>2</sup>

GARAGEM / A.T.  
GARAGE / TECHN. A.

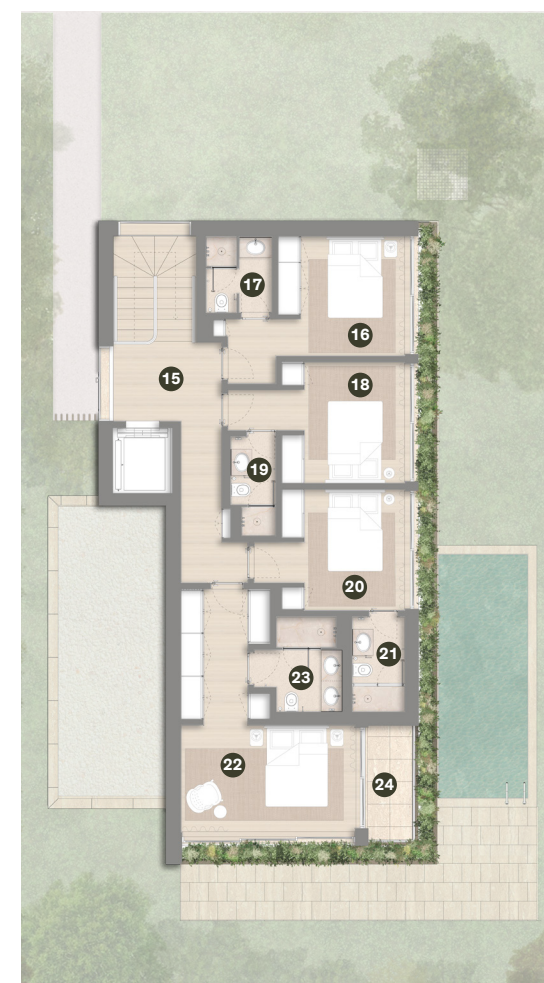
01.	GARAGEM GARAGE	57.07 m <sup>2</sup>
02.	CIRCUL. CIRCULATION	16.79 m <sup>2</sup>
03.	LS. POWDER ROOM	1.30 m <sup>2</sup>
04.	MULTIFUN. MULTI PURPOSE	13.22 m <sup>2</sup>
05.	LAVANDARIA LAUNDRY	6.46 m <sup>2</sup>
06.	ÁREA TÉCN. TECHN. AREA	5.01 m <sup>2</sup>
07.	PÁTIO PATIO	22.17 m <sup>2</sup>
08.	VESTÍBULO HALL	8.02 m <sup>2</sup>
09.	SALA LIVING ROOM	44.24 m <sup>2</sup>
10.	COZINHA KITCHEN	21.86 m <sup>2</sup>
11.	ARRUMOS STORAGE	3.82 m <sup>2</sup>
12.	LS. POWDER ROOM	1.60 m <sup>2</sup>
13.	TERRAÇO TERRACE	43.25 m <sup>2</sup>
14.	PISCINA SWIM. POOL	15.64 m <sup>2</sup>
15.	CIRCUL. CIRCULATION	11.83 m <sup>2</sup>
16.	SUÍTE SUITE	13.22 m <sup>2</sup>
17.	LS. ENSUITE BATHROOM	3.43 m <sup>2</sup>
18.	SUÍTE SUITE	12.15 m <sup>2</sup>
19.	LS. BATHROOM	2.90 m <sup>2</sup>
20.	SUÍTE SUITE	11.52 m <sup>2</sup>
21.	LS. BATHROOM	3.49 m <sup>2</sup>
22.	SUÍTE MASTER SUITE	21.16 m <sup>2</sup>
23.	LS. ENSUITE BATHROOM	4.92 m <sup>2</sup>
24.	VARANDA BALCONY	3.60 m <sup>2</sup>



CAVE  
BASEMENT



PISO 0  
GROUND FLOOR



PISO 1  
1<sup>ST</sup> FLOOR

0 1M 5M

**AVISO LEGAL:** As informações e imagens contidas nesta planta são meramente indicativas e podem estar sujeitas a alterações ou variações devido a requisitos técnicos, construtivos ou legais; durante a execução da obra a promotora poderá ter de implementar alterações impostas pela Câmara Municipal, ou por outras entidades ou prestadores de serviços. As áreas interiores indicadas na planta (para cada divisão da habitação) correspondem à área útil, o que não inclui paredes. **LEGAL NOTICE:** The information and images contained in this plan are merely indicative and may be subject to changes or variations due to technical, constructive or legal requirements; during the execution of the work the developer may have to implement changes imposed by the City Council, or other entities or service providers. The internal areas mentioned on the plan (for each space in the house) are the usable area which doesn't include walls.

PROMOTOR  
PROMOTER  
**FVC**  
GROUP

ARQUITETURA  
ARCHITECTURE  
**VENTURA**  
+PARTNERS

DESIGN DE INTERIORES  
INTERIOR DESIGN  
**DINGDONG**